

# ∞ TRUE CONFESSIONS ∞

There ARE Other  
Ladies in My Life



Tom & Jane Rood  
Shelbyville, Illinois

-----

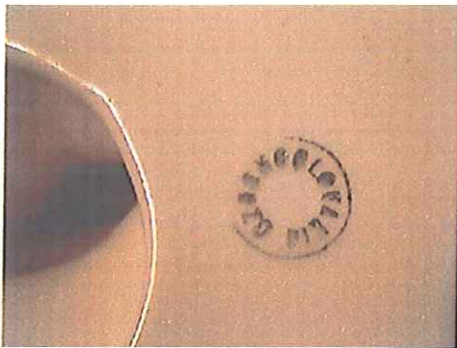
2010 CCA Convention  
Indianapolis

June 2010  
Tom Rood

# Czechoslovakia Marks



Marks on many of the all glass figurines  
Czecho over slovakia approx. 1 1/4"



Tiny Czechoslovakia  
circle  
approx. 3/8"



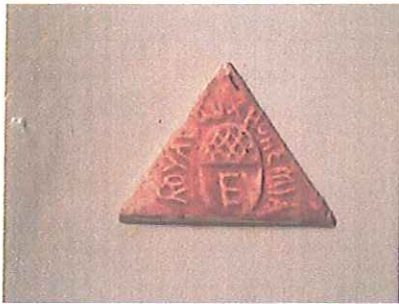
2lines  
approx. 3/4"



Pirkenhammer



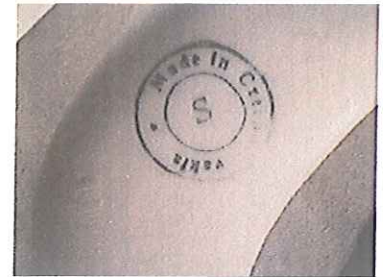
# Royal Dux Marks



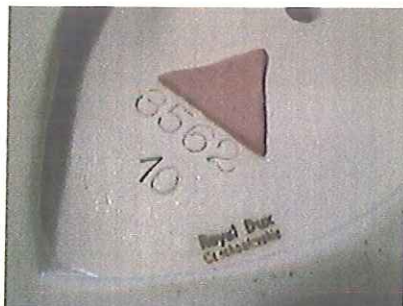
1900-1920  
large pink triangle  
"E" in acorn  
"Czechoslovakia"  
not printed  
on this piece



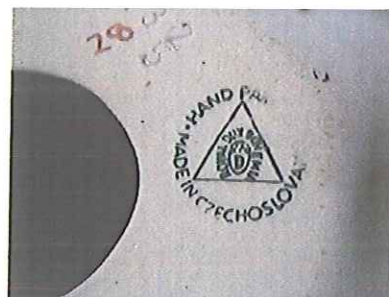
1918 - 1938



1918 - 1938



1920 -1980



1970 - 1992



present day  
mark  
"Czech Republic"

1938 -1945

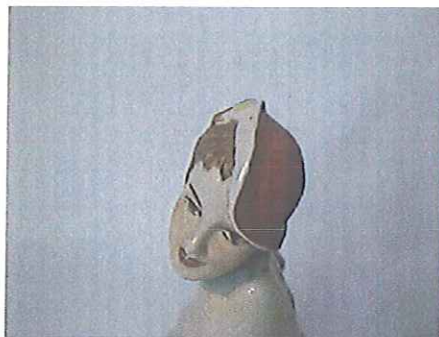
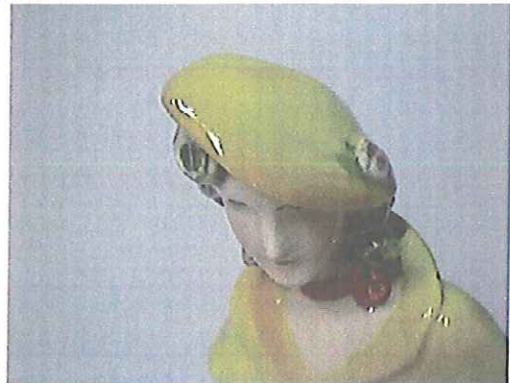
"Bohemia" and "Czechoslovakia" not used  
during German occupation

pottery marked "Deutschland" or "Germany"



# HATS - HATS - HATS

Art Deco had HATS!!



# All-Over Glossy Glaze

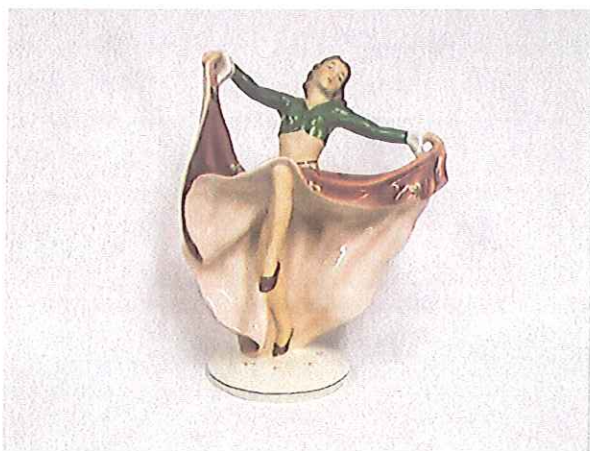


**Always variations  
in facial detailing.**

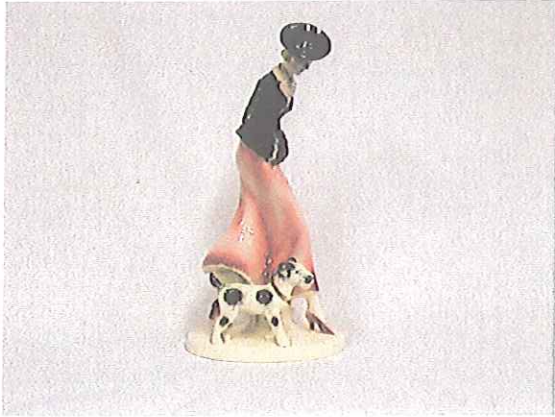
**Note these two  
are the same  
mold.**



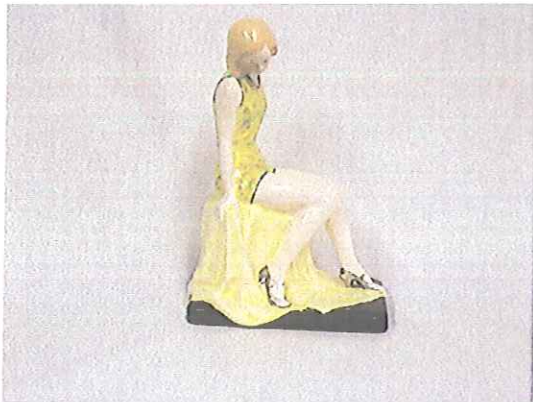
# Matte Skin



# Unusual Finds

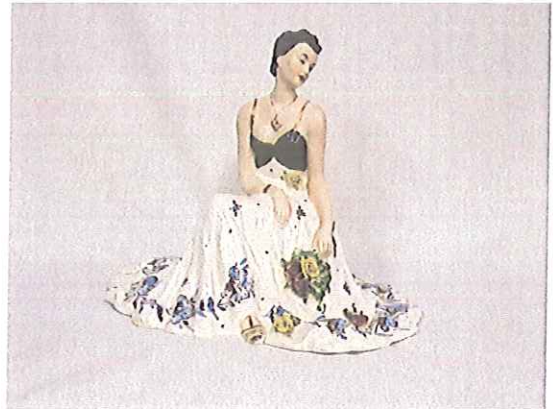


Deco  
Ladies  
with  
Dogs



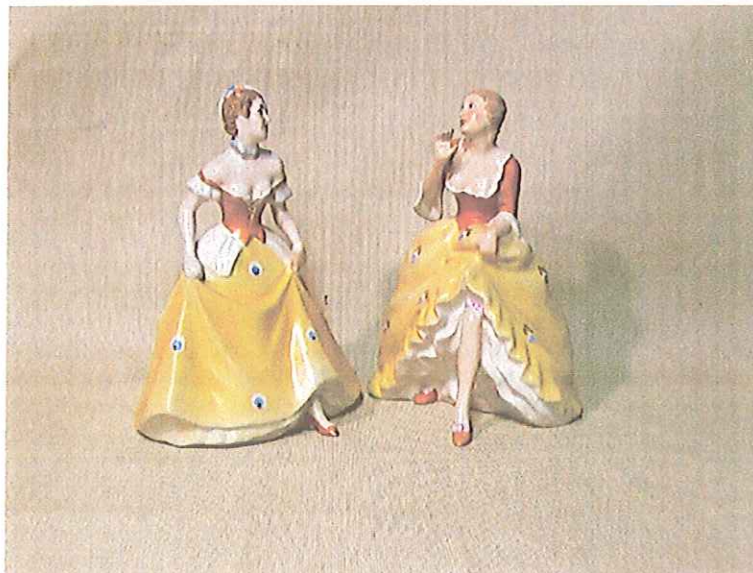
Bathing  
Attire

Sculpted  
Flowers  
&  
Bouquet



Matched Pair - Male & Female  
Impressed mark: STROBACH

# Royal Dux Deutschland





# Figurine Sizes

left to right  
8" - 9" - 12" - 23"



## Math Lesson

For a quick math lesson on ratio and proportion, please see Jane the college math teacher. Something about "as one linear dimension changes, so do the other dimensions change proportionally."

*Speaker request:* Please see Jane concerning the math lesson on the largest figurine without Tom present. He's heard the lesson...several times!!